

Morse MT-3 control

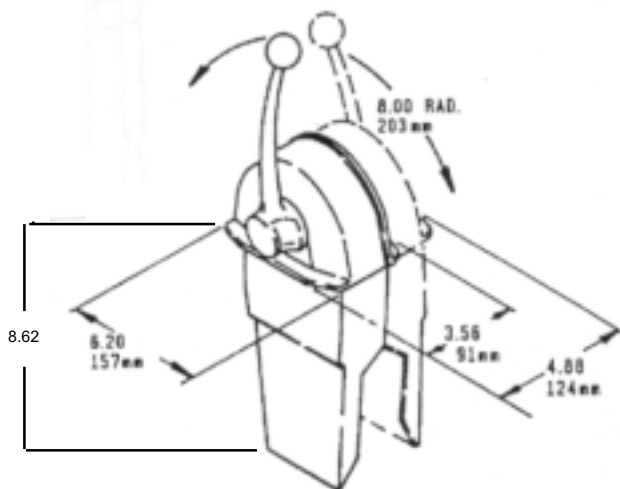
Features:

- Binnacle styling with the advanced features of a dual-function control: one-handle engine control, neutral warm-up.
- Neutral safety switch to help prevent starting in gear.
- Built-in friction drag helps prevent slippage and throttle creep while underway.
- Mechanical advantage - shift 2.77:1/ throttle 3.57:1.
- Meets/exceeds all applicable industry standards.

Applications:

Great for single station inboards stern drives and outboards, single or dual engine. Perfect for applications in which a binnacle control appearance is desired, but one-lever throttle/shift control is preferred. Also a great choice when space is at a premium.

This control uses 33 type cables. *Not suitable for use with Mercury® and OMC® OEM type control cables.*



308602



308601

Dual
Function

Engine Control:

SINGLE LEVER:

MT-3 Single 308601

SINGLE LEVER:

MT-3 Twin 308602

Options/Service Items:

Optional Neutral Safety Switch 051801-023

H.D. Kit-43C Cables, MT-3 Single.....308742

Hand Lever 032778-002

Chrome Side Plate, MT-3 308598-001

Ball Knob, Red 4009912

Decal, FWD-NEU-REV 038853

Hardware Kit for MT-3 single lever 308599

Hardware Kit for MT-3 twin lever 308727

OMC Replacement Switch for Sterndrive
(available for MT-2 only) 301585

Start and warm-up are done by pulling out the hand levers in the neutral position. This disengages the clutch and allows throttle to be advanced in neutral. Returning to neutral detent re-engages clutch.

Morse S control

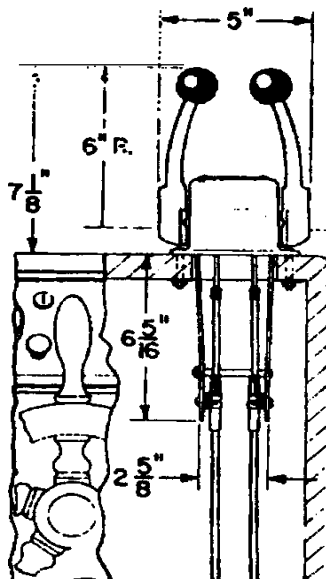
Features:

- Highly polished corrosion resistant chrome plated brass covers.
- Simple, rugged, compact design.
- Optional neutral safety switch to prevent starting in gear.
- Optional hand lever extension.
- Optional shift detent kit (if used in dual stations; use on main station only).
- Uses 33 and 43 type cables.
- Mechanical advantage - shift 2.77:1/ throttle 2.77:1.
- Meets/exceeds all applicable industry standards.

Applications:

Ideal for inboards, stern drives and outboards, the S controls are suitable for single or dual station use. These single function engine controls are available in both one or two-lever models.

Both S controls use 33 and 43 type cables.
Not suitable for use with Mercury® and OMC® OEM type control cables.



31001-001



31002-001

Single Function

Engine Controls:

Single S	031002-001
Twin S	031001-001

Options/Service Items:

Clutch Detent Kit	022328
In-Series Dual Station Kit, 30 Series (2 required for twin)	039489-002
In-Series Dual Station Kit, 40 Series (2 required for twin)	042152
Neutral Safety Switch Kit	047307
OMC Replacement Shift Switch Only ...	301585
Lever Extension	036773
Throttle Hold Kit (one per lever, prevents throttle creep)	306997
Ball Knob, Red	4009912
Ball Knob, Black	4009819
Stainless Steel Throttle Knob (grooved)	CA69052P**
Stainless Steel Shift Knob (smooth)	CA69051P**
** Fits most controls with 3/8-24 threaded levers.	
Mounting Hardware Kit, Twin	061001

Morse SL-3 control

Features:

- Four styles: single and twin lever topmounts + sidemount with and without cut-off switch.
- Firm yet effortless shift and throttle motion.
- Entire gear mechanism is enclosed and permanently lubricated for long-lasting, smooth operation.
- Port or starboard installation with various cable entry angles.
- Easily adapted to push or pull cable actuation mode without tools.
- "Easy-On" cable design means no shift or throttle adjustments, and accepts virtually every type of cable.
- Push button for neutral engine warm-up.
- Trim switch in handle grip for one-hand operation.
- Neutral interlock prevents starting in gear.
- Adjustable brake prevents throttle creep.
- Mechanical advantage 2.38:1.
- Meets/exceeds all applicable standards.

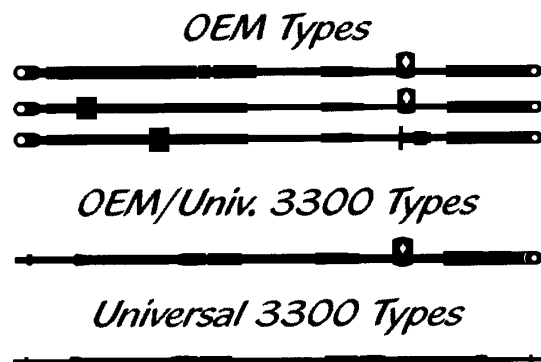


Applications:

A perfect match with nearly any engine: outboards, inboards or sterndrives: Evinrude, Johnson, Honda, Mariner, Mercruiser, Mercury, Nissan, OMC Cobra, Suzuki Tohatsu, U.S. Marine/Force, Volvo, Yamaha and others.

Attractive and astonishingly simple in design, the SL-3 is ideal for most boats. Offered in four styles, it's a snap to install without needing control modifications or tedious cable adjustments. And it accepts nearly every type of cable!

(accepts these cables:)



Morse SL-3 control

Engine Controls:

SL-3 TOP MOUNT SINGLE LEVER:

Top Mount Single Standard309476
 Top Mount Single Deluxe (trim)309477
 Top Mount Single Deluxe
 (trim & tilt - Volvo) 309478-001
 Top Mount Sgl. Deluxe (trim & tilt) . 309478-002

SL-3 TOP MOUNT TWIN LEVER:

Top Mount Twin Standard309479
 Top Mount Twin Deluxe (trim)309480
 Top Mount Twin Deluxe (trim & tilt)309481

SL-3 SIDE MOUNT

Side Mount Standard309473
 Side Mount Deluxe (trim)309474
 Side Mount Deluxe
 (trim & tilt - Volvo) 309475-001
 Side Mount Deluxe (trim & tilt) 309475-002

SL-3 SIDE MOUNT W/CUT-OFF SWITCH (OUTBOARD):

Side Mount Std. (cutoff switch) 311322-002
 Side Mount Deluxe (cutoff & trim) 311323-002
 Side Mount Deluxe (cutoff, trim & tilt)
 (5 wire - Volvo) 311324-002
 Side Mount Deluxe (cutoff, trim & tilt)
 (4 wire - non-Volvo) 311325-002

SL-3 SIDE MOUNT W/CUT-OFF SWITCH (I/O AND INBOARD):

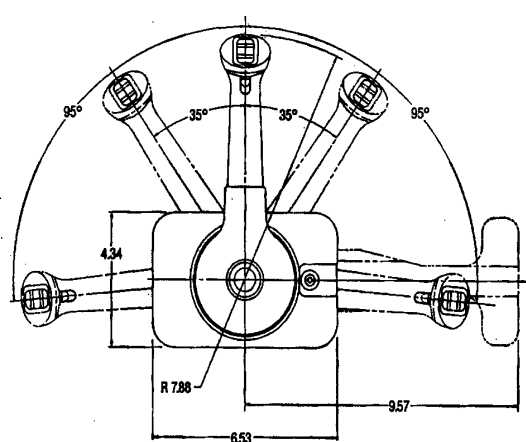
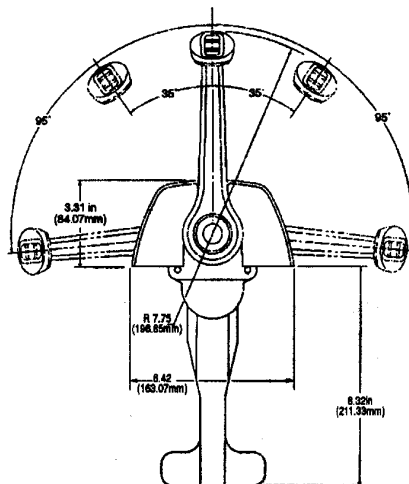
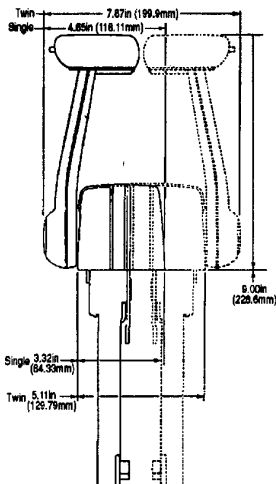
Side Mount Std. (cutoff switch) 311322-001
 Side Mount Deluxe (cutoff & trim) 311323-001
 Side Mount Deluxe (cutoff, trim & tilt)
 (5 wire - Volvo) 311324-001
 Side Mount Deluxe (cutoff, trim & tilt)
 (4 wire - non-Volvo) 311325-001

Options/Service Items:

Trim & Tilt Switch Kit315590
 Side Mount Tilt Switch/wire harness309509
 Top Mount Tilt Switch/wire harness 309514
 Lanyard Cut-off Switch (side mount) 311376

Cut-off Switch with Cover 311380-001
 Cut-off Switch Only 311379-001
 Neutral Safety Switch 051801-033

Top Mount (Single) replace. parts kit316941
 Top Mount (Twin) replace. parts kit316942
 Side Mount replacement parts kit317002
 Side Mount replacement parts kit
 (with cutoff switch)317003
 Cable Nest Kit
 (mounts all cables to controls) 212151-001



Phone: 800-225-0004 ☎ Fax: 908-486-1056
 e-mail: sales@sealandpower.com

Morse SR control

Features:

- Polished stainless steel cover, marine grade chrome levers and rugged cast hanger plate.
- Removable cover enables easy access to the control mechanism.
- Adjustable brakes and stops.
- Optional neutral safety switch to prevent starting in gear.
- Optional shift detent kit (if used in dual stations; use on main station only).
- Uses 33 and 43 type cables.
- Mechanical advantage - shift 3.10:1/ throttle 3.10:1.
- Meets/exceeds all applicable industry standards.

36469-001



Single Function

Engine Control:

Twin SR 2-lever control 036469-001

Options/Service Items:

Clutch Detent Kit 036774
 In-Series Dual Station Kit, 30 Series
 (2 required for twin lever control) .. 039490-002
 HD Conversion Kit
 (2 required for twin lever control) 040090
 In-Series Dual Station Kit,
 40 Series (2 required for twin) 048501-002

Neutral Safety Switch Kit 041117
 OMC Replacement Shift Switch Only ... 301585

Hand Lever 036326

Ball Knob, Red 4009912
 Ball Knob, Black 4009819
 Stainless Steel Throttle Knob
 (grooved) CA69052P**
 Stainless Steel Shift Knob
 (smooth) CA69051P**
 ** Fits most controls with 3/8-24 threaded levers.

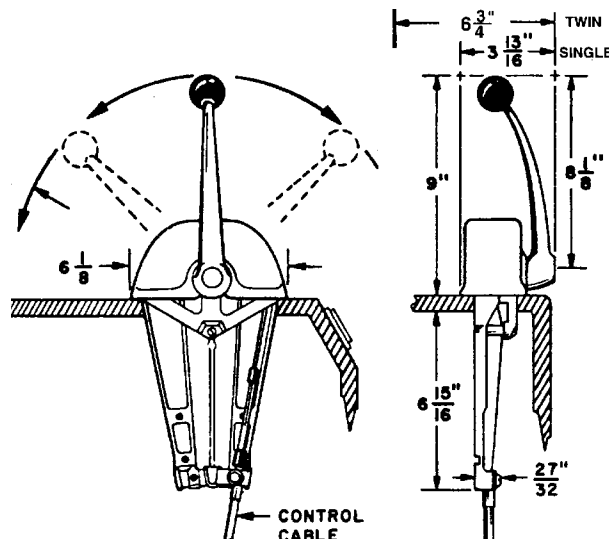
Replacement Stainless Steel Lever CA69060P
 (Fits Teleflex® CH5600 SLT and Morse® Twin SR controls only)

Mounting Hardware Kit, Twin 060991
 Replacement Dome Cover, Twin 047682

Applications:

Ideal for inboards, stern drives and outboards, Twin SR controls are suitable for single or dual stations and can utilize 33 or 43 type cables.

Not suitable for use with Mercury® and OMC® OEM type control cables.



Morse ST/STB controls

Features:

- Compact, rugged design and classic traditional styling.
- Durable heavy chrome finish.
- Models for 33 and 43 type cables.
- Available with or without throttle brake.
- Mechanical advantage - 3.20:1.
- Meets/exceeds all applicable industry standards.

Applications:

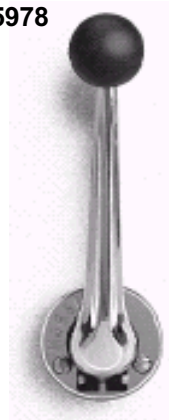
ST controls are great choice for many inboards and sailboats, stern drives and outboards. The STB control includes a throttle brake and can shift Berkeley jets when a foot throttle is used.

ST/STB units can utilize 33 type universal control cables.

ST-HD and STB-HD controls use 43 type control cables.

ST/STB controls are for single-station use only and are not suitable for use with Mercury® and OMC® OEM type control cables.

44777/45978



31791/39115



Single
Function

Engine Controls:

ST CONTROLS (NO BRAKE):

ST Control (33 type cables) 031791
ST-HD Control (43 type cables) 039115

STB CONTROLS (WITH BRAKE):

STB w/external brake
(33 type cables) 044777
STB-HD w/external brake
(43 type Cables) 045978

Options/Service Items:

Hand Lever Assembly, Chrome 031046-002
Ball Knob, Black
(replaces 035232-044) 4009819
Stainless Steel Shift Knob
(smooth) CA69051P**
** Fits most controls with 3/8-24 threaded levers.

Throttle Cable Brake 044386
Mounting Hardware Kit
(30 Series Kit) 062279

