

Universal Throttle & Shift Cables

Features:

- Universal cables meet all specifications for 33/3300, 43/4300 or 64/6400 type original equipment cables.
- Cables can use the existing connection components.
- Stainless steel and brass fittings.
- **Standard cables** use stainless steel Lubri-Core™ core wire for smooth operation and long life. (6" minimum bend radius.)
- **Midrange cables** use a heavier jacket and either stainless steel Lubri-Core™ or a coated cable (33C Supreme) core wire. (6" minimum bend radius.)
- **TFXTREME® premium 3300 cables** have a heavy jacket and a splined, coated core element for maximum smoothness with minimal lost motion. (4" min. bend radius.)
- **4300 type cables** have stainless steel conduit fittings. (5" minimum bend radius.)
- **6400 type cables** have stainless steel conduit fittings. (8" minimum bend radius.)
- Black HDPE outer casing for durability and best resistance to UV and chemicals.
- Cables meet/exceed all applicable industry standards.

Applications:

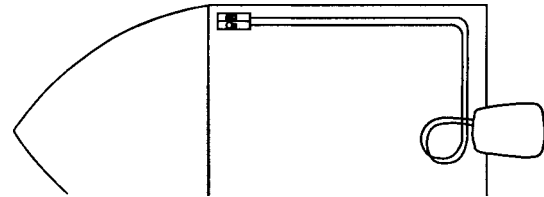
Universal type cables are designed to fit aftermarket engine controls as well as OEM units from BMW®, Chrysler®, Honda®, Nissan®, Suzuki®, Volvo®, Yamaha® and others. Five versions of the 33C type are available, including a TFXTREME® model.

TFXTREME® versions of the 3300 cables are offered for demanding applications in which a smooth feel at the control is essential. Teleflex 4300 and 6400 series cables — for heavy duty applications — are TFXTREME products.

How to Measure Control Cables

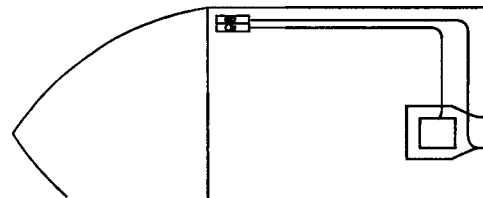
"Measure Twice. Order Once."

For a New Installation:



Outboards:

Measure from control along unobstructed cable routing to center of outboard. Add four feet to allow for loop which provides unrestricted engine movement. Round up to next whole foot and order required cable part number. (Last two digits of cable part number equal cable length in feet.)



Inboards & Stern Drives:

Measure from control along unobstructed cable routing to shift and/or throttle connection. Round this dimension off to the next whole foot and order required cable part number. (Last two digits of cable part number equal cable length in feet.)



For Replacement of Existing Cable:

Remove old cable, measure from tip to tip and round up to the next whole foot.



Phone: 800-225-0004 Fax: 908-486-1056
e-mail: sales@sealandpower.com

