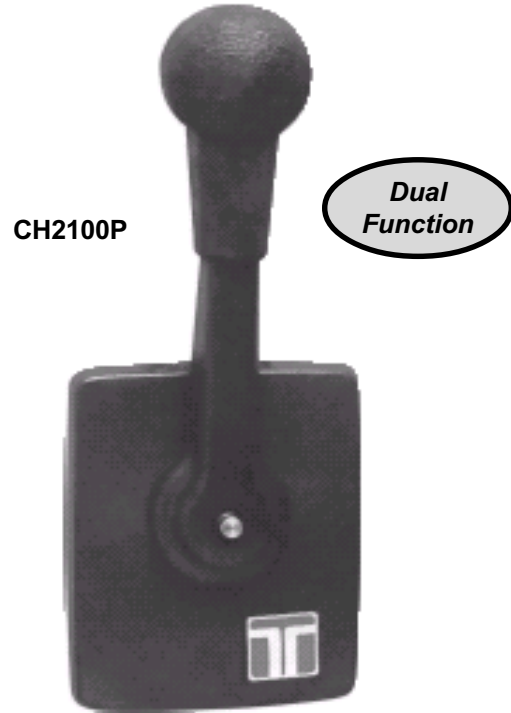


Teleflex CH2100 control

Features:

- Single lever, dual action for throttle & shift.
- Surface mount design for quick, tidy installation.
- Includes neutral warm up capability.
- Includes hardware for two 33 type cables.
- Positive shift detents and neutral lock-out.
- Optional neutral safety switch.
- Weatherproof exterior, rugged diecast frame.
- Meets/exceeds all applicable industry standards.



Applications:

Virtually all sail engine applications in which a side mount control is desirable. Single lever, dual action design controls throttle and shift with one lever. Utilizes 3300/33 type "universal" engine control cables.

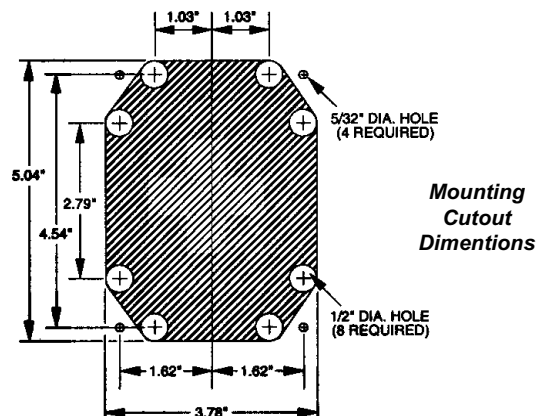
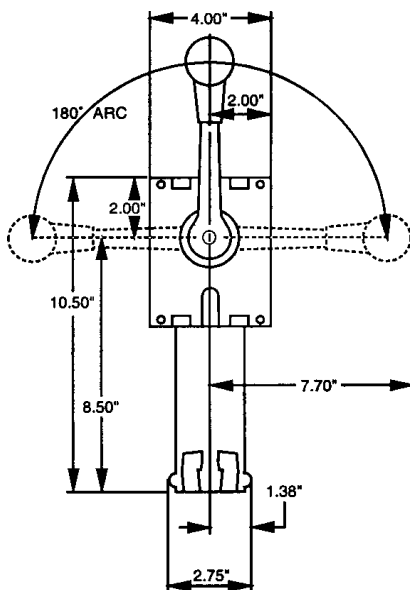
Not suitable for use with Mercury® and OMC® OEM type control cables.

Engine Control:

Side Mount Sailboat Control CH2100P

Options/Service Items:

Optional Neutral Safety Switch CA27090P



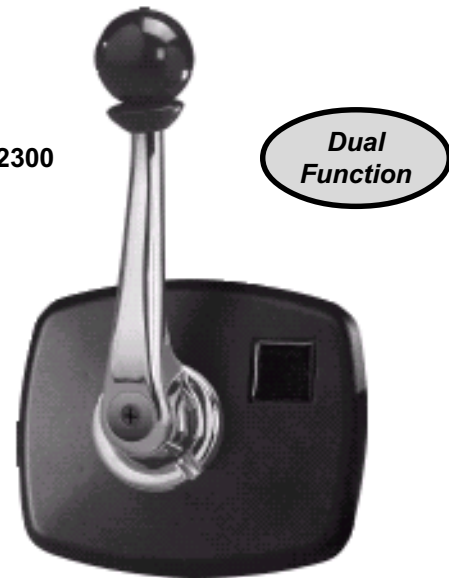
Phone: 800-225-0004 Fax: 908-486-1056
e-mail: sales@sealandpower.com

Teleflex CH2200/2300 controls

Features:

- Single lever, dual action for throttle & shift.
- Superior neutral engine warm-up control (ski version).
- Flush mount design for quick, tidy installation.
- Includes hardware for two 33 type cables.
- Crisp shifting ball grip for a solid, sure feel.
- Neutral safety switches:
 - Optional for ski version;
 - Waterproof type included with jet version.
- Weatherproof exterior, rugged diecast frame.
- Meets/exceeds all applicable industry standards.

CH2200/2300

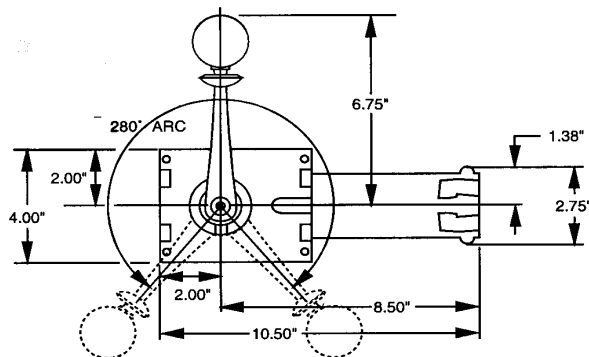


Applications:

Ski version: all inboard ski boats and other single station craft requiring super-smooth, precise throttle control.

Jet version: all jet boats powered by Mercury® Sport Jet 90 & early 120, OMC® Turbo Jet, or similar propulsion systems.

Single lever, dual action design controls throttle and shift with one lever using 33 type cables.



Engine Control:

SKI BOAT CONTROL:

Side Mount Ski Boat Control CH2200P

JET BOAT CONTROL:

Side Mount Jet Boat Control CH2300P

Options/Service Items:

CH2200 SKI

Optional Neutral Safety Switch (Ski) CA27090P

CH2300 JET

Neutral Safety Switch (Jet) CA27100P

CH2200 OR CH2300:

Stainless Steel Knob (red-grooved) CA69052P

Stainless Steel Knob (smooth) CA69051P

NOTE: Correct Craft® installations of the CH2200 control use a proprietary mounting arrangement. Please contact Correct Craft when servicing this control.

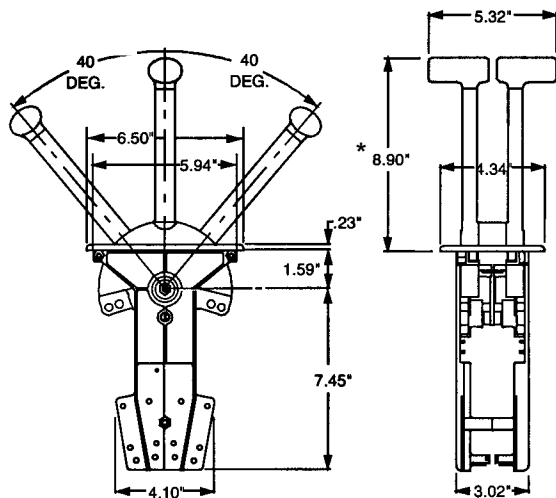
Teleflex CH4400 control

Features:

- Dual lever, single action for throttle & shift.
- Dual station capability.
- Stylish look with either straight or raked handles.
- Positive detent for shifts.
- Push or Pull to operate throttle and/or shift.
- Includes hardware for two 3300/33 control cables.
- Optional neutral safety switch.
- Adjustable ratchet feel for precise throttle operation.
- Removable knobs for recessed mounting.
- Meets/exceeds all applicable industry standards.

Applications:

For single or dual station applications with single or twin engines (including outboards utilizing an optional neutral safety switch kit). Uses 33 type universal control cables. *Not suitable for use with Mercury® and OMC® OEM type control cables.*



*Raked Handle Models are 7.14" height above deck



Engine Controls:

STRAIGHT HANDLE MODELS:

Chrome/Smooth Friction.....	CH4451P
Chrome/Ratchet Friction.....	CH4452P
Black/Smooth Friction.....	CH4453P
Black/Ratchet Friction.....	CH4454P

RAKED HANDLE MODELS:

Chrome/Smooth Friction.....	CH4481P
Chrome/Ratchet Friction.....	CH4482P
Black/Smooth Friction.....	CH4483P
Black/Ratchet Friction.....	CH4484P

Options/Service Items:

Optional Neutral Safety Switch	CA68075P
3300 Heavy Duty Brass Pivot Kit (2)	CA27563P

CH4400 Cover (Black Plastic)	6800611
CH4400 Cover (Chrome Plastic)	6800618

CH4400 Knob (Chrome Zinc Alloy)	6801812
CH4400 Knob (Black Aluminum)	6801811
CH4400 Knob (Red Aluminum)	6801815
CH4400 Screw for Knob	6801918
CH4400 Black Knob Cap (Shift)	6802215
CH4400 Red Knob Cap (Throttle)	6802111

CH4400 Hardware Kit.....	CA68057P
--------------------------	----------

Teleflex CH5600 SLT control

(Self Locking Throttle)

Features:

- Patented SLT technology prevents throttle creep. Lever stays where it is placed.
- Superior twin station performance.
- Polished Stainless Steel levers & dome.*
- Positive detent for shifts.
- Can be user-configured as either Push or Pull to operate throttle and/or shift.
- Includes hardware for two 33 type universal control cables.
- Easy-access adjustable detents/stops (under easily removable dome).
- Optional neutral safety switch.
- Meets/exceeds all applicable industry standards.

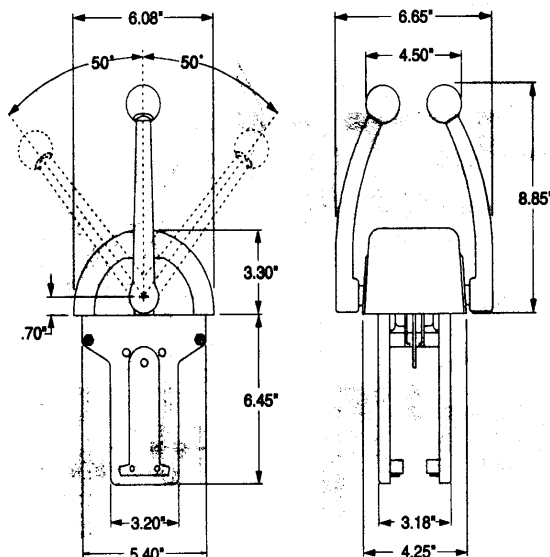
Drop-in replacement for Morse® Twin SR controls.

*standard on CH5600P version

Applications:

For single or dual stations with single or twin engines (including outboards utilizing an optional neutral safety switch kit).

Uses 3300 type universal control cables. *Not suitable for use with Mercury® and OMC® OEM type control cables.*



CH5600

Single Function



Engine Control:

SLT Top Mount Control CH5600P

Options/Service Items:

Optional Neutral Safety Switch CA69009P

Cable Attachment Kit
(3300/Dual Station) CA69022P

3300 Heavy Duty
Brass Pivot Kit (2) CA27563P

Replacement Red Knob 4009912

Replacement Black Knob 4009819

Stainless Steel Throttle Knob
(grooved) CA69052P**

Stainless Steel Shift Knob
(smooth) CA69051P**

** Fits most controls with 3/8-24 threaded levers.

CH5600 Mounting Hardware Kit CA69013P

(Includes control mounting hardware, 1 detent, 1 throttle friction screw & lever stops.)

Replacement Stainless Steel Lever CA69060P

(Fits Teleflex® CH5600 SLT and Morse® Twin SR controls only.)