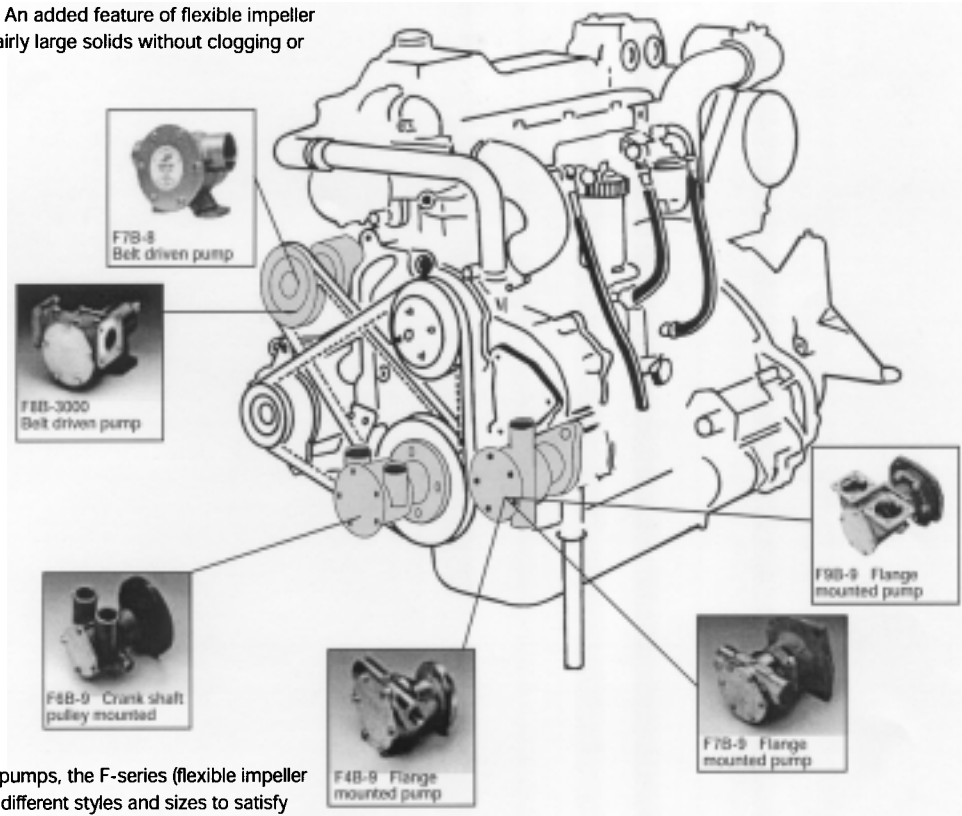


**JOHNSON PUMP**

Flexible impeller pumps of Johnson Pump F-series provide an efficient solution to most raw water pumping needs. The primary advantage of a flexible impeller pump is that it is self-priming. As the vanes of the impeller are depressed and rebound, they create their own vacuum drawing fluid into the pump. A dry pump can lift water up to as much as 3 metres. Thus a flexible impeller pump being used for engine cooling needs not be located below the water line or manually primed. An added feature of flexible impeller pumps is that they can pass fairly large solids without clogging or damaging the pump.

For general raw or fresh water applications, the standard long lasting neoprene rubber impeller is used.

A general feature of all flexible impeller pumps is that they cannot be permitted to run dry for more than 30 seconds. Both the impeller and the seals depend upon the water for lubrication and will soon burn out if run dry. Wearing parts are easily replaceable, and service kits are available for all standard models.



**Pump Mounting**

Johnson Pump engine cooling pumps, the F-series (flexible impeller pumps) are available in several different styles and sizes to satisfy different cooling system needs. Flanged pumps which mount directly to the engine and crank shaft pulley mounted pumps are available for a wide variety of engines. Johnson Pump is the original equipment pump supplier to the largest manufacturers world-wide of inboard engines. Both flange mounted and pulley driven pedestal pumps can be used to provide cooling with a maximum of ease and flexibility. Pump ports are available in sizes from 3/8" to 2.1/2".

**Flange Mounted Pumps**

Flanged pumps are normal pumps produced in high volumes, customer designed for flange-mounting at a power take off of the engine. Different types of drives can be used but mainly gears or any type of driving members are used.

**Crank Shaft Pulley Mounted**

These pumps are designed for direct installation on the engine crank shaft pulley. Max. revs. 5,000 per minute. For some engines an adaptor kit for the engine crank shaft pulley is available. To prevent the pump from rotating, a torque bracket from the fastening point on the pump body to a suitable point on the engine has to be used.

**Pedestal Mounted Pumps**

Pulley driven pedestal mounted pumps are used when a free driving pulley is available on the engine.

Two different types of pedestal mounted pumps are supplied by Johnson Pump.

• **FB-8**

A range of bronze pumps in compact design. Ideal as cooling water pumps in marine engines. Available in sizes from 3/8" to 1.1/2", all with permanently lubricated double ball bearings and mechanical seal.

• **FB-3000**

A range of extra heavy duty pedestal mounted pumps excellent for cooling purpose in commercial vessels. The design means separate bearing housings with permanently lubricated double ball bearings, mechanical shaft seal for extended service life. Wetted parts as wear plate, cam and endcover are easily replaceable.

**Phone: 800-225-0004    Fax: 908-486-1056**  
**e-mail: sales@sealandpower.com**



## Self-Priming Flexible Impeller Clutch Pumps

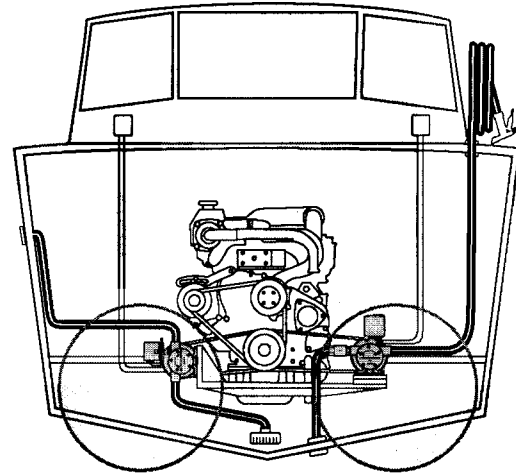
For high capacity bilge and deckwash pumps, nothing beats an electro-magnetic clutch pump from Johnson Pump. Also suitable as an emergency pump for e.g. fire fighting.

### Automatically Controlled Pumps

With an electro-magnetic clutch you will have pumping power whenever needed, at a push of a button, without being at the pump. Combined with a vacuum switch from Johnson Pump (recommended for bilge pump application), the clutch will automatically disengage whenever the pump starts priming air, thereby preventing dry running and pump damage.

Automatically controlled pumps are available in sizes from 1" to 2.1/2" (20 L/min to 625 L/min), with clutches in 12 or 24 volts. Wearing parts are easily replaceable and service kits are available for all standard models.

Vacuum Switch as extra accessory



Bilge Pumping

Deckwash pumping

## Heavy Duty Electro-Magnetic Clutch Pump

### F7B-5001 – 1"

Pump body: Bronze

Connection for vacuum switch

Impeller: 09-1028B (neoprene)

Shaft: Stainless steel

The shaft is mounted with permanently lubricated double ball bearings

Seal: Mechanical seal

Cam: Full or reduced

Connection: 1" NPT

Clutch: Electro-magnetic 12/24 V DC

Pulley: 2xA or 1xB-groove

#### Dimensions and Weight

Length: 6.14"

Width: 4.72" (excl. pulley)

Height: 3.66" (excl. pulley)

Pulley dia: ø7.00"

Weight: 12.7 lbs



Order No.

10-24577-98 Neoprene impeller, full cam, wearplate, without clutch

Replaces pump series 10-24071-98

### F8B-5001 – 1.1/2"

Pump body: Bronze

Connection for vacuum switch

Impeller: 09-819B (neoprene)

Shaft: Stainless steel

The shaft is mounted with permanently lubricated double ball bearings

Seal: Mechanical seal

Cam: Full or reduced

Connection: 1 1/4" or 1 1/2" NPT

Clutch: Electro-magnetic 12 /24 V DC

Pulley: 2xA or 1xB-groove

#### Dimensions and Weight

Length: 8.85"

Width: 6.29" (excl. pulley)

Height: 4.88" (excl. pulley)

Pulley dia: ø7.00"

Weight: 22 lbs



Order No.

10-13022-98 Original Johnson Pump style 1 1/2" ports

10-13022-95 US version 1 1/4" ports\*

10-13022-96 US version 1 1/2" ports\*\*

\*replaces Jabsco series 11870

\*\*replaces Jabsco series 50200

### Choice of Clutch (order seperately)

05-32-01 electro-magnetic clutch, 12 V 2xA pulley

05-32-02 electro-magnetic clutch, 24 V 2xA pulley

05-32-03 electro-magnetic clutch, 12 V 1xB pulley

05-32-04 electro-magnetic clutch, 24 V 1xB pulley



## Self-Priming General Purpose Flexible Impeller Bronze Pumps

### Heavy Duty Impeller Pump

A range of multipurpose bronze pumps. Compact design, raw water resistant pumps at an attractive price – with the renowned Johnson Pump quality. These pumps are designed for a number of applications on board.

With excellent self-priming capability, these pumps are ideal as cooling water pumps for marine engines, bilge pumps, deckwash pumps, fresh water pumps, fuel transfer pumps and other applications. Also ideally suited on shore to empty septic tanks, to flush clean and to fill water tanks. Available in sizes from 3/8" to 1.1/2"

#### F35B-8 – 3/8"

Pump body: Bronze  
Impeller: 09-808B  
Shaft: Stainless steel  
The shaft is mounted with permanently lubricated double ball bearings  
Seal: Mechanical seal.  
Cam: Full or reduced  
Connection: 3/8" NPT

#### Dimensions and Weight

Length: 4.29"  
Width: 3.14"  
Height: 1.18"  
Drive shaft: 3/8"  
Weight: 1.2lbs



Order No.  
**10-24569-51** Mechanical seal, neoprene impeller, full cam, wearplate.

Replaces series 10-35038

#### F4B-8 – 3/8"

Pump body: Bronze  
Impeller: 09-810B  
09-810B-9 (nitrile)  
Shaft: Stainless steel  
The shaft is mounted with permanently lubricated double ball bearings  
Seal: Mechanical seal.  
Cam: Full or reduced  
Connection: 3/8" NPT

#### Dimensions and Weight

Length: 4.37"  
Width: 3.15"  
Height: 1.97"  
Drive shaft: 3/8"  
Weight: 1.8lbs

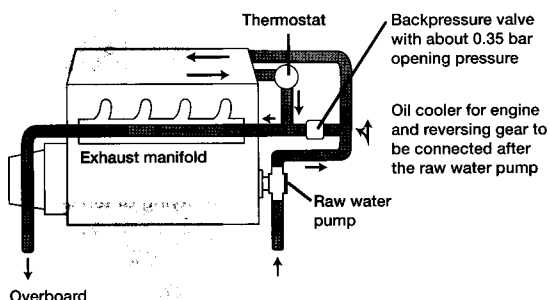


Order No.  
**10-24570-51** Mechanical seal, neoprene impeller, full cam, wearplate.

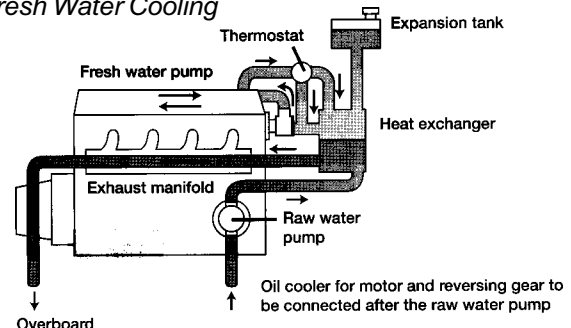
Replaces series 10-24074

### Typical Marine Engine Cooling Systems

#### Raw Water Cooling



#### Fresh Water Cooling





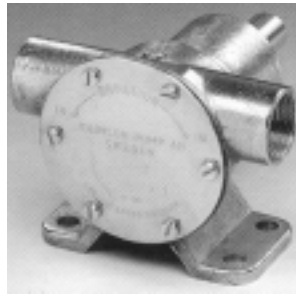
## Self-Priming General Purpose Flexible Impeller Bronze Pumps

### F5B-8 – 3/4"

Pump body: Bronze  
 Impeller: 09-1027B  
           09-1027B-9 (nitrile)  
 Shaft: Stainless steel  
       The shaft is mounted with permanently lubricated double ball bearings  
 Seal: Mechanical seal.  
 Cam: Full or reduced  
 Connection: 3/4" NPT

#### Dimensions and Weight

Length: 5.95"  
 Width: 4.17"  
 Height: 1.97"  
 Drive shaft: 5/8"  
 Weight: 3.5lbs



Order No.  
**10-24571-51**      Mechanical seal, neoprene impeller, full cam, wearplate.

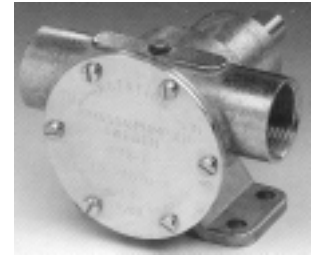
Replaces series 10-24073

### F7B-8 – 1"

Pump body: Bronze  
 Impeller: 09-1028B (neoprene)  
           09-1028B-9 (nitrile)  
 Shaft: Stainless steel  
       The shaft is mounted with permanently lubricated double ball bearings  
 Seal: Mechanical seal.  
 Cam: Full or reduced  
 Connection: 1" NPT

#### Dimensions and Weight

Length: 6.69"  
 Width: 4.72"  
 Height: 1.97"  
 Drive shaft: 5/8"  
 Weight: 4lbs



Order No.  
**10-24572-51**      Mechanical seal, neoprene impeller, full cam, wearplate.

Replaces series 10-24070

### F8B-8 – 1.1/2" & 1.1/4"

Pump body: Bronze  
 Impeller: 09-819B (neoprene)  
           09-819B-9 (nitrile)  
 Shaft: Stainless steel  
       The shaft is mounted with permanently lubricated double ball bearings  
 Seal: Mechanical seal  
 Cam: Full or reduced  
 Connection: 1.1/2" NPT & 1.1/4" NPT

#### Dimensions and Weight

Length: 8.54"  
 Width: 6.30"  
 Height: 2.56"  
 Drive shaft: 1"  
 Weight: 13lbs



Order No.  
**10-13021-95\***      1 1/4" Ports  
**10-13021-96**      1 1/2" Ports

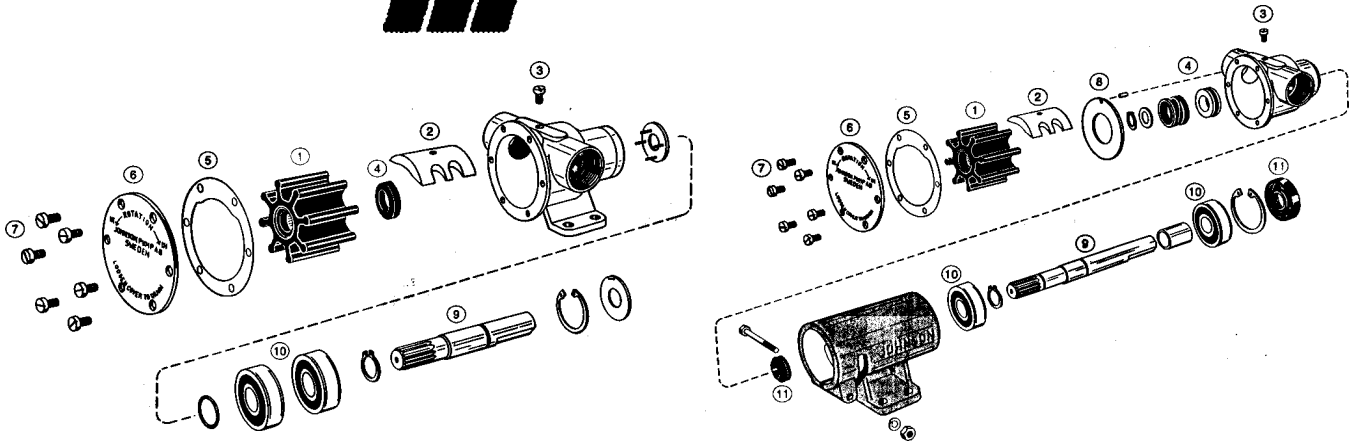
\* Replaces Jabsco series 6400

### Vacuum Switch

for automatic shut off operation to prevent pump damage  
 The vacuum switch works with all self-priming impeller pumps and should be used for e.g. bilge pumping/emptying of tanks to prevent the pump from dry running.  
 The vacuum switch automatically shuts the pump off when the bilge/tank is dry. With the switch fitted, you can start the pump by remote push button or manually by depressing lever on the switch.

Order No.  
**09-45053**





### Service Kit and Parts Reference Guide

Part No.	Pump Type	Service Kit	Impeller	Cam	Camscrew	Seal	Gasket	Endcover	Endcover Screw	Wearplate	Shaft	Bearing	Bearing Seal
10-13021-9	F8B-8007	09-45575	09-1029B	01-42680	05-04-108	05-20-505	01-42424	01-42422-1	05-04-178	01-42423	01-35132	05-08-504	—
10-13026-7	F9B-3007	09-45581	09-802B	01-43137	05-04-108	05-20-118	01-42424	01-42422-1	05-04-46	01-42423	01-35137	05-08-504	—
10-13095-01	F9B-9	09-45582	09-814B	01-43137	05-04-108	09-20-118	01-42424	01-42422-1	05-04-46	01-42423	01-35212	05-08-505	05-29-517
10-13096-01	F8B-9	09-45579	09-819B	01-42680	05-04-108	09-20-118	01-42424	01-42422-1	05-04-46	01-42423	01-35212	05-08-505	05-29-517
10-24070-5	F7B-8007	09-45592	09-1028B	01-42679	05-04-107	05-29-105	01-42445	01-42441	05-04-174	—	01-45045	05-08-128	—
10-24073-5	F5B-8007	09-45585	09-1027B	01-42397	05-04-117	05-29-105	01-42401	01-42398	05-04-162	—	01-45045	05-08-128	—
10-24074-7	F4B-8007	09-45587	09-810B	01-42389	05-04-115	05-29-139	01-42391	01-42398	05-04-163	—	01-45069	05-08-130	—
10-24228-1	F5B-9	09-45808	09-1027B*	01-45329	05-04-174	05-29-515	01-45315	01-45312-1	05-04-550	—	01-45681	05-08-128	—
10-24232-1	F6B-9	09-45825	09-812B*	01-45670	05-04-174	05-29-515	01-45315	01-45312-1	05-04-550	—	01-45681	05-08-128	—
10-24253-1	F7B-902	09-45590	09-1028B*	01-42584	05-04-125	09-20-115	01-42445	01-42441	05-04-117	01-42443	01-35220	05-08-21	05-29-519
10-24277-3	F7B-9	09-45592	09-1028B*	01-42679	05-04-144	05-29-105	01-42445	01-42441	05-04-550	—	01-45844	05-08-129	05-29-105**
10-24316-01	F6B-9	09-45825	09-812B*	01-45670	05-04-174	05-29-515	01-45315	01-45312-1	05-04-550	—	01-45681	05-08-128	—
10-24349-01	F7B-9	09-45592	09-1028B*	01-42679	05-04-107	05-29-105	01-42445	01-42441	05-04-174	—	01-46092	05-08-128	05-29-105**
10-32621-3	F5B-902	09-45913	09-801B	01-45014	05-04-175	05-29-105	01-45020	01-45021	05-04-49	—	01-45022	01-45023	—
10-35038-1	F35B-8	09-45589	09-808B*	01-42910	05-04-114	05-29-139	01-43240	01-43239	05-04-163	01-45087	01-45069	05-08-130	—
10-35038-4	F35B-8007	09-45589	09-808B	01-42910	05-04-114	05-29-139	01-43240	01-43239	05-04-163	01-45087	01-45069	05-08-130	—
10-35038-5	F35B-8027	09-45589	09-808B	01-42415	05-04-553	05-29-139	01-43240	01-43239	05-04-163	01-45087	01-45069	05-08-130	—
10-35098-2	F4B-9	09-45905	09-1026B*	01-42389	05-04-114	05-29-139	01-45284	01-45282	05-04-163	—	01-45235	05-08-503	05-29-139**
10-35157-3	F35B-9	09-45589	09-808B*	01-42910	05-04-114	05-29-139	01-43240	01-43239	05-04-163	01-45087	01-45556	05-08-503	05-29-139**

A = Includes parts numbers 1, 4, 5, 7

\* = Includes gasket

\*\* = Included in service kit

*In addition to the pumps listed above, Johnson Pump manufactures over 100 different variations of engine cooling pumps that are original equipment on engines manufactured around the world.*

*Please call us with your original pump number for a replacement pump or repair parts.*

Phone: 800-225-0004    Fax: 908-486-1056  
e-mail: sales@sealandpower.com