

## Teleflex Marine Instruments

For over forty years, Teleflex has been building precision instruments for marine, transportation and off-road vehicle markets. Our products are shaped from that experience combined with the latest in design and manufacturing technologies.

Cellular Manufacturing, Statistical Process Control and rigorous Real World Testing ensure that our uncompromising quality standards are met. All Teleflex Marine instruments meet or exceed all industry standards and certification requirements.

Our products are designed for years of dependable service, using non-corroding materials and, on electrical instruments, the proven Vector meter movement.

Teleflex also offers a complete line of senders and accessories to complement their instruments. Contact us for more information.

### Design Advantages:

- Highest accuracy (better than automotive/ more consistent than competitors) from -40° to +185° F.
- Precision Vector movement in all electrical units is silicone-dampened to minimize pointer bounce and magnetically shielded so compass and other gauges are not affected.
- Premium materials resist corrosion, UV, chemicals.
- Real glass lenses for clarity and scratch resistance.
- Reverse polarity and overvoltage protection.
- Easy-to-install rugged metal mounting brackets.
- Lock washers for mounting/connection integrity.
- Automotive type wedge base lighting used where possible for easy bulb replacement.
- Comprehensive instrument lines and matching senders to cover most functions.



Amega® Domed has clean-looking black dials with white and red graphics plus through-dial and perimeter lighting for great readability. Amega has been very popular, available in several styles since its debut in 1986.

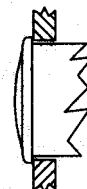
### Features:

- Black dial, red graduations, white numerals, vivid white pointer staff.
- Scratch resistant curved glass lenses, with black, near-flush bezels.
- U.S. and metric scales, with ISO symbols, where appropriate.
- Perimeter and thru-dial lighting.
- A comprehensive array of outboard water pressure instrument kits.
- Optional add-on square bezels for modular appearance.

## Amega® Domed



LENS/BEZEL PROFILE



## Teleflex Marine Instruments

### Driftwood



LENS/BEZEL  
PROFILE



*Driftwood features light gray dials, clean black numerals and a black pointer hub with white staff. These instruments lend a sophisticated look to any dash. Combination blue through-dial and white perimeter lighting are included for excellent readability at night.*

### Features:

- Light gray dial, black graduations/ numerals, white pointer staff.
- Scratch resistant curved glass lenses, with black, near-flush bezels.
- U.S. and metric scales, with ISO symbols, where appropriate.
- White perimeter and blue thru-dial lighting.
- Optional add-on square bezels for modular appearance.

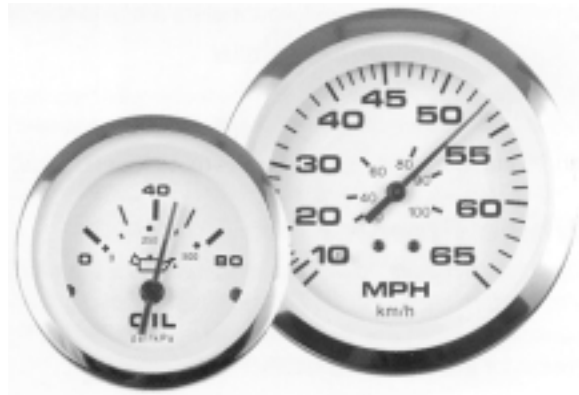


*A comprehensive family of instruments for most engine types, Lido features crisp white dials and fire-orange pointer tips. Red through-dial and white perimeter lighting provide great night readability. Excellent inboard coverage with engine sync gauges\* and diesel alternator and magnetic pickup tachometers\*\*.*

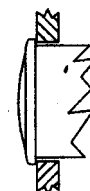
### Features:

- White dial, black numerals, black pointer with fire-orange tip.
- Scratch resistant curved glass lenses, with polished stainless steel, near-flush bezels.
- U.S. and metric scales, with ISO symbols.
- White perimeter and red thru-dial lighting.
- Comprehensive line includes tachometers for diesel alternator and magnetic pickup PLUS synchronizer gauge (Suitable for gas or diesel engines with appropriate module. Module required, not included with gauge).
- Optional add-on square bezels for modular appearance.

### Lido



LENS/BEZEL  
PROFILE



## Teleflex Marine Instruments

### Sahara



LENS/BEZEL  
PROFILE



*Our hottest OEM instruments! With crisp tan dials and fire-orange pointer tip, Sahara gives any dash the elegant OEM look. Combined red through-dial and white perimeter lighting provide great night readability. These aren't merely "close enough" — they're the real thing!*

### Features:

- Tan dial and retainer, black graduations and numerals, black pointer with fire-orange tip.
- Scratch resistant curved glass lenses, with black matte, near-flush bezels.
- U.S. and metric scales, with ISO symbols, where appropriate.
- White perimeter and red thru-dial lighting.
- Optional add-on square bezels for modular appearance.



*Ideal for outboards and stern drives! With stainless steel bezels, brushed aluminum dials and black pointers, Sterling instruments give a bright, gleaming look to any dash. Perimeter lighting provided for night operation.*

### Features:

- Brushed aluminum dial, black graduations/numerals, black pointer.
- Scratch resistant curved glass lenses, with polished stainless steel, near-flush bezels.
- U.S. and metric scales, with ISO symbols, where appropriate.
- Perimeter lighting.
- Optional add-on square bezels for modular appearance.

### Sterling



LENS/BEZEL  
PROFILE



## Teleflex Marine Instruments

### Red International

Classic vivid graphics, perimeter lighting, and the proven vector movement in all electrical gauges for outstanding readability, accuracy and durability in marine use. Dials have American and metric scales, with ISO function symbols. Our most extensive line.



LENS/BEZEL PROFILE



### Features:

- White & red on black with white pointer.
- Scratch resistant glass lenses, flat with high-profile bezel.
- Perimeter lighting for easy night readability.
- U.S. and metric scales, with ISO symbols.
- Optional add-on square bezels for modular appearance.
- Comprehensive line includes tach for Force® applications with 20-pole alternator, competition electric speedometer, quartz clock, and engine synchronizer gauge\*.

\*Module required, not included with gauge.

Sportsman features rotated graphics on 3" units, which place optimum operating ranges at the top of the dial. Low bezels and flat lenses shed water. Easy to read: black pointer with fire orange tip and perimeter lighting for night use. Sportsman is an excellent drop-in replacement for most white O.E.M. gauges.

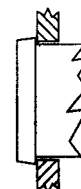
### Sportsman



### Features:

- Sharp black Euro graphics on white.
- Rotated graphics put operating ranges on top (3" instruments).
- Black pointer with high-visibility fire orange tip. U.S. & Metric scales.
- Perimeter lighting for easy readability at night.
- Low-profile bezels, scratch resistant real glass lenses.
- Excellent drop-in replacement for most white O.E.M. gauges.

LENS/BEZEL PROFILE



## Teleflex Marine Instruments

### Vector



LENS/BEZEL  
PROFILE



Vector features crisp blue and white graphics on a soft charcoal background with a bright white pointer and perimeter lighting. Electrical instruments have the proven vector movement for superior performance. Vector is an ideal drop-in replacement for blue highlighted O.E.M. gauges.

### Features:

- Blue & white graphics on charcoal background.
- Vivid white pointer with black hub.
- Black high-profile bezel and retainer.
- Perimeter lighting for easy readability at night.
- Both U.S. and metric scales, with ISO symbols where appropriate.
- Scratch resistant glass lenses.
- Great replacement for other "blue-line" instruments.



A classic line for inboards including diesels, Heavy Duty includes mechanical water temperature and oil pressure gauges, ammeters, engine sync gauges\* and a range of diesel tachometers, including a programmable tach/hourmeter.

### Features:

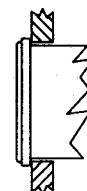
- Classic white graphics and pointer on deep black faces.
- Low-profile polished stainless steel bezels.
- Perimeter lighting and scratch resistant glass lenses.
- Tachometers for diesels available.
- Programmable tach/hourmeter offered.
- Several temperature and mechanical oil pressure gauges available.
- Ideal replacement for Stewart-Warner® "Deluxe" instruments.
- Optional add-on square bezels for modular appearance.

\*Module required, not included with gauge.

### Heavy Duty



LENS/BEZEL  
PROFILE



## Teleflex Marine Instruments

### Premier



LENS/BEZEL  
PROFILE



*Ideal for inboards, including diesels, Premier White features polished stainless steel bezels and clean white dials with modern black and blue graphics. When illuminated, black dial grads become red and pointer lights red. Automotive type light-piping and fog-resistant design combine for outstanding readability.*

### Features:

- Full automotive type lighting, no “halo” around dial edges. When illuminated, white dial grads become red, pointer lights white.
- Fog-Resistant\* Design!
- White dial, black graduations/numerals (metrics in blue), red pointer staff.
- Scratch resistant curved glass lenses, with polished stainless steel near-flush bezels.
- U.S. and metric scales, with ISO symbols, where appropriate.
- Optional add-on square bezels for modular appearance.

\* Complies with SAE J-1810

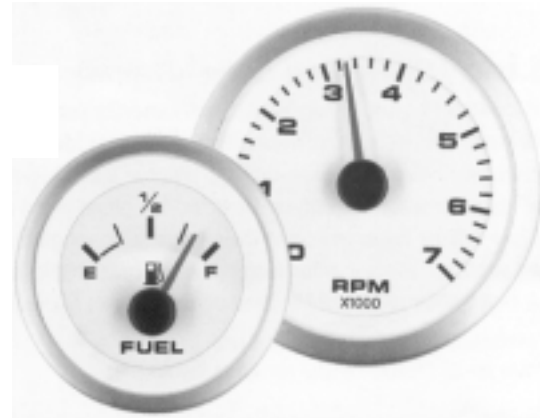
*A very popular OEM line, Premier features black dials with modern white and blue graphics. When lighted, white dial grads become red and pointer lights white. These instruments feature automotive type light-piping and a fog-resistant design for outstanding readability.*

### Features:

- Full automotive type lighting, no “halo” around dial edges. When lit, white dial grads become red, pointer lights white.
- Fog-Resistant\* Design!
- Black dial, white graduations/numerals (metrics in blue), white pointer staff.
- Scratch resistant curved glass lenses, with black, near-flush bezels.
- U.S. and metric scales, with ISO symbols, where appropriate.
- Optional add-on square bezels for modular appearance.
- Line includes standard ignition engine synchronizer kits including module.

\* Complies with SAE J-1810

### Premier White



LENS/BEZEL  
PROFILE

