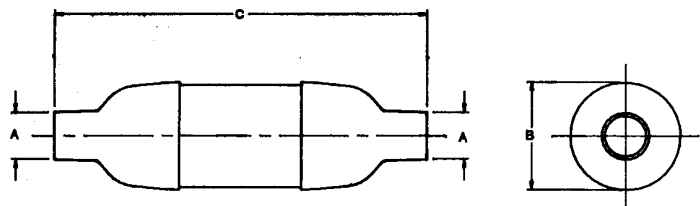
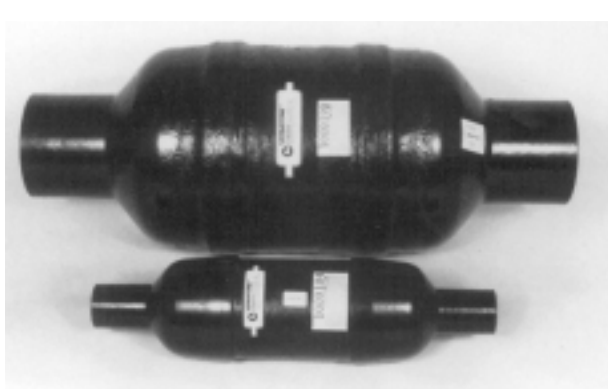


Marine wet muffler systems by Centek/Vernay are unsurpassed in quality, workmanship, design and durability. Over thirty years of innovative engineering has earned Centek/Vernay a worldwide reputation as the authority in marine muffler systems made of fiber-glass reinforced plastic composites.

VERNATONE™ MUFFLERS

QUIETER



PART NO.	A INLET/OUTLET	B DIAMETER	C LENGTH
1000103	2.50"	5.58"	21.62"
1000104	3.00"	7.07"	25.84"
1000105	3.50"	8.09"	30.00"
1000106	4.00"	9.06"	33.69"
1000107	4.50"	10.00"	35.62"
1000108	5.00"	11.00"	38.75"
1000111	6.00"	12.12"	41.50"
1000119	8.00"	16.12"	52.75"

The original and most copied FRP wet muffler in the marine industry. Designed for gasoline or diesel engines, minimizes added back pressure, will not rust or corrode. Constructed of fire retardant, self extinguishing resins – truly the industry standard.

More sizes and styles are available. Call for additional information.

GENERAL RECOMMENDATIONS CHART

SIZE (DIM. "A")	MAXIMUM H.P.		SIZE (DIM. "A")	MAXIMUM H.P.	
	GASOLINE	DIESEL		GASOLINE	DIESEL
1.5" or 1.63"	30	10	4.5"	320	170
2"	60	25	5"	370	210
2.5"	110	40	6"	440	280
3"	160	60	8"	–	420
3.5"	220	85	10"	–	680
4"	280	125	12"	–	900

THE MUFFLER OUTLET MUST MATCH THE DOWNSTREAM PORTION OF THE SYSTEM. FOR V-BLOCK ENGINES WITH SEPARATE MUFFLERS FOR EACH BANK, DIVIDE THE H.P. BY 2 AND MATCH TO THE APPROPRIATE SIZE.

VERNALIFT

Wet Marine Exhaust Muffler

Centek Industries is proud to introduce the new improved Vernalift. The new Vernalift exceeds ABYC specifications. The Vernalift's strengthened design means it can withstand internal pressures far higher than any competitive muffler of non-corrosive materials.

The newly designed dome-shaped cannister and extra strong fiberglass construction provide significantly higher safety margins. These improvements make the NEW VERNALIFT the safest fiberglass lift muffler in today's market.

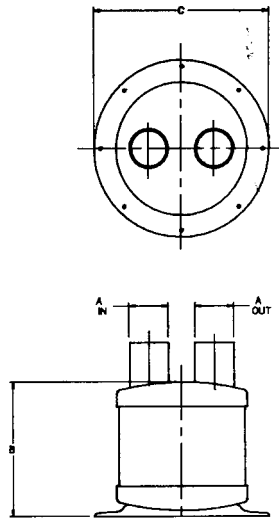


Figure 1

TOP IN – TOP OUT

PART NO.	A INLET/OUTLET	B HEIGHT	C BASE
1500001	1.50"	6.13"	8.50"
1500002	1.63"	6.13"	8.50"
1500003	1.63"	8.00"	10.50"
1500007	1.88"	8.00"	10.50"
1500009	2.00"	8.00"	10.50"
1500010	2.00"	10.13"	12.19"
1500015	2.50"	10.13"	12.19"
1500063	3.00"	12.00"	12.00**
1500064	3.50"	12.00"	12.00**
1500065	4.00"	12.00"	12.00**
1500068	5.00"	16.00"	16.50**

*Bases on these models are square



Figure 1

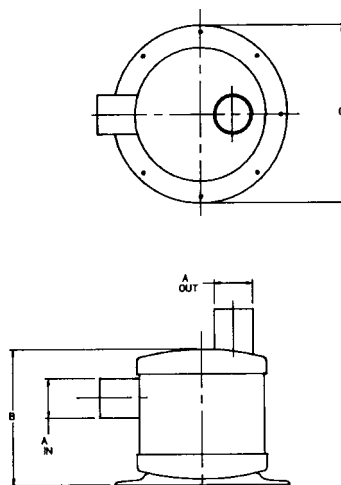


Figure 2

SIDE IN – TOP OUT

PART NO.	A INLET/OUTLET	B HEIGHT	C BASE
1500018	1.50"	6.13"	8.50"
1500019	1.63"	6.13"	8.50"
1500020	1.63"	8.00"	10.50"
1500024	1.88"	8.00"	8.50"
1500026	2.00"	8.00"	10.50"
1500027	2.00"	10.13"	13.38"
1500032	2.50"	10.13"	12.19"
1500085	3.00"	12.00"	12.00**
1500087	3.50"	12.00"	12.00**
1500088	4.00"	12.00"	12.00**
1500090	5.00"	16.00"	16.50**

*Bases on these models are square



Figure 2

More sizes are available. Call for additional information.

The new Vernalift provides the following features:

VERNALIFT

Wet Marine Exhaust Muffler

- Strength
- Safety
- Reduced exhaust noise
- Suitable for gas or diesel
- Compact
- Suitable for propulsion or generator set

INLINE - IN / OUT

PART NO.	A INLET/OUTLET	B LENGTH	C DIAMETER
1500035	1.50"	10.50"	6.38"
1500036	1.63"	10.50"	6.38"
1500037	1.63"	14.00"	8.38"
1500041	1.88"	14.00"	8.38"
1500043	2.00"	14.00"	8.38"
1500049	2.50"	17.50"	10.00"
1500051	3.00"	17.50"	10.00"



Figure 3

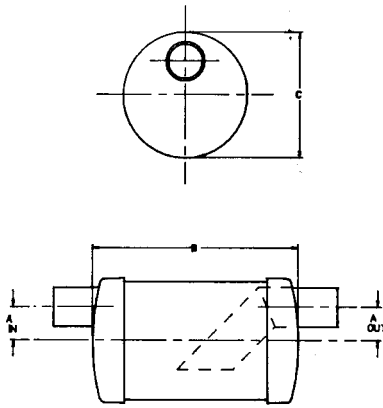


Figure 3

SIDE 45 DEGREE ANGLE IN - TOP OUT

PART NO.	A INLET/OUTLET	B HEIGHT	C BASE
1500103	1.50"	6.13"	6.38"
1500104	1.63"	8.00"	8.38"
1500106	1.88"	10.13"	10.00"
1500107	2.00"	10.13"	10.00"
1500110	2.50"	10.13"	10.00"
1500112	3.00"	12.00"	12.38**

*Base on this model is square



Figure 4

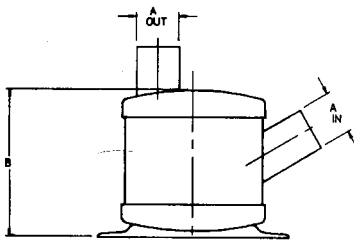
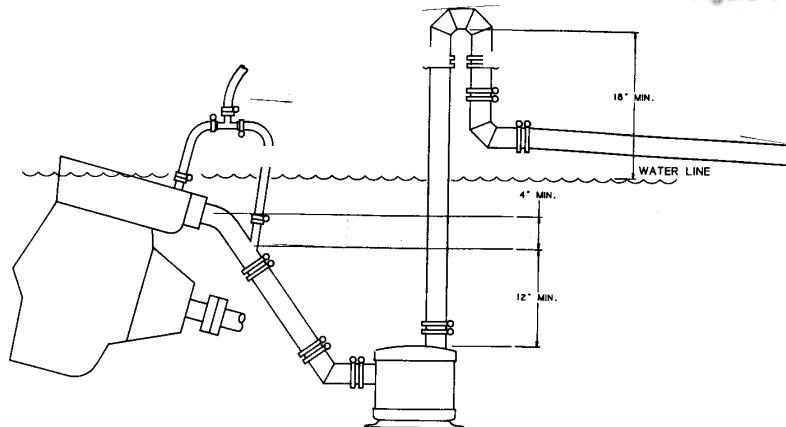


Figure 4

**Typical
Below Waterline
Installation**

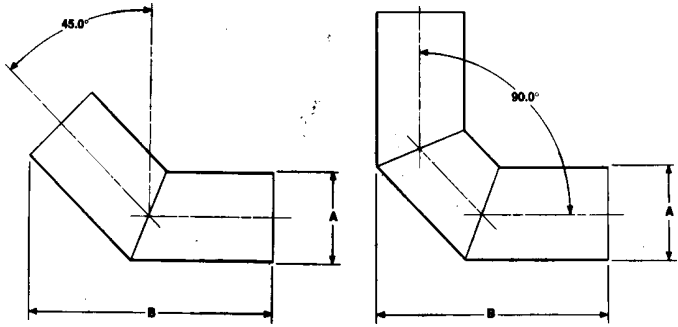


More sizes are available. Call for additional information.

Phone: 800-225-0004 Fax: 908-486-1056
e-mail: sales@sealandpower.com

Wet Exhaust System Fittings

Centek wet exhaust system fittings are made from fiberglass and fire retardant resins. They are light weight, strong, non corroding and durable. Centek fittings are easy to install when repairing, repowering or replacing a wet exhaust system. The O.D.'s are quality manufactured to match other Centek components and are compatible with standard exhaust hose.

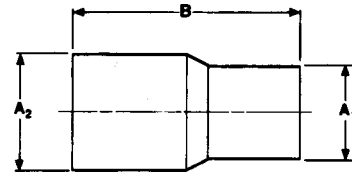


45° Elbow

PART NO.	A NOM O.D.	B
1200217	1.50"	6.00"
1200214	1.63"	6.00"
1200349	1.75"	6.00"
1200281	1.88"	6.63"
1200192	2.00"	6.75"
1200350	2.25"	7.00"
1200308	2.38"	7.25"
1200215	2.50"	7.75"
1200294	2.88"	8.50"
1200109	3.00"	8.50"
1200111	3.50"	10.25"
1200112	4.00"	10.25"
1200168	4.50"	12.13"
1200113	5.00"	13.63"
1200114	6.00"	15.38"
1200216	8.00"	27.00"
1200204	10.00"	30.75"

90° Elbow

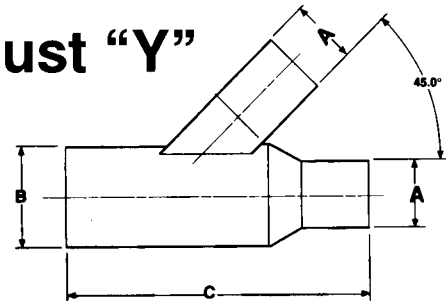
PART NO.	A NOM O.D.	B
1200202	1.50"	5.13"
1200201	1.63"	5.13"
1200312	1.75"	5.50"
1200267	1.88"	5.63"
1200200	2.00"	5.75"
1200330	2.25"	6.00"
1200269	2.38"	6.31"
1200195	2.50"	6.38"
1200295	2.88"	7.38"
1200171	3.00"	7.50"
1200189	3.50"	9.00"
1200157	4.00"	9.38"
1200190	4.50"	10.88"
1200175	5.00"	12.25"
1200162	6.00"	14.00"
1200197	8.00"	22.50"
1200327	10.00"	22.00"



Couplings

PART NO.	A1	A2	B
1200266	1.62"	2.00"	3.00"
1200309	1.88"	2.00"	5.88"
1200277	2.00"	2.50"	4.25"
1200264	2.00"	3.00"	8.00"
1200270	2.50"	3.00"	8.50"
1200161	3.00"	3.50"	9.50"
1200170	3.00"	4.00"	10.00"
1200222	3.50"	4.00"	10.50"
1200185	4.00"	4.50"	11.50"
1200223	4.00"	5.00"	12.00"
1200227	4.50"	5.00"	12.50"
1200285	5.00"	5.50"	10.00"
1200148	5.00"	6.00"	14.00"
1200166	6.00"	8.00"	18.00"
1200259	8.00"	10.00"	22.00"

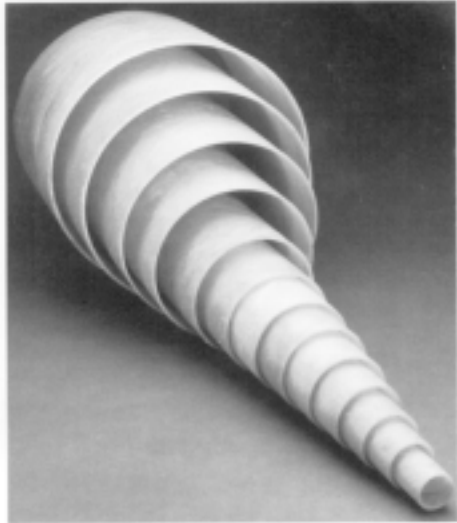
Exhaust "Y"



PART NO.	A	B	C
1200321	2.50"	3.50"	18.50"
1200256	3.00"	4.00"	14.00"
1200255	3.50"	4.50"	16.00"
1200316	4.00"	4.00"	16.50"
1200120	5.00"	5.00"	21.50"
1200322	6.00"	8.00"	30.00"



VERNATUBE *Fiberglass Marine Wet Exhaust Tubing*



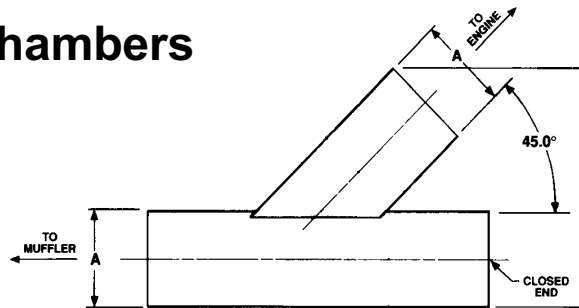
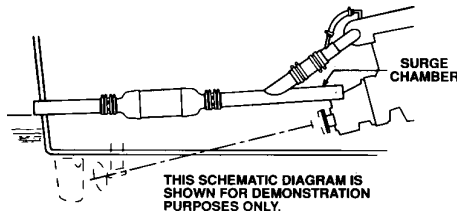
Vernatube is filament wound with resin impregnated continuous rovings for optimum strength. Use of synergistic fillers with the newest fire retardant resins give Vernatube fire ratings far better than values required for self-extinguishing per ASTM-D-365 and UL 94V-0.

The smooth resin rich I.D. provides minimal resistance to water or gas flow while the precise O.D. facilitates easy use of rubber exhaust hose connections. Vernatube can be installed in either gasoline or diesel wet marine muffler systems.

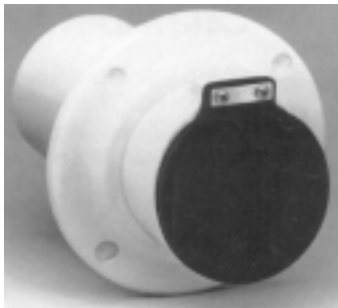
Vernatube is available in sizes from 1.5 to 10 inch O.D. Standard length is 10 feet. All sizes are "special order" and are FOB Factory.

.....more from CENTEK INDUSTRIES!

Surge Chambers



Thru-Hull Exhaust Fittings with and without Flapper



Scupper Drain Fittings

Check Valves

