



**Elbows: 1800 Series**

**OSCO**

For Conversion Manifolds

Necessary pipe plugs are included.



0°



45°



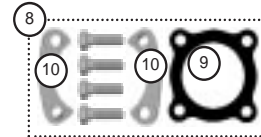
90°



0°



45°



The **1800-K** is included with each of the 1800 series elbows.



70°



70°

- 1. **1830** Elbow, straight, 2<sup>3</sup>/<sub>8</sub>" outlet. Includes 1800-K mounting kit.
- 2. **1835** Elbow, straight, 3" outlet. Includes 1800-K mounting kit.
- 3. **1820** Elbow, 30°, 2<sup>3</sup>/<sub>8</sub>" outlet. Includes 1800-K mounting kit.
- 4. **1825** Elbow, 30°, 3" outlet. Includes 1800-K mounting kit.
- 5. **1845** Elbow, 90°, 3" outlet. Includes 1800-K mounting kit.
- 6. **1870-V6** Elbow, 70°, 2<sup>3</sup>/<sub>8</sub>" outlet. Includes 1800-K mounting kit.
- 7. **1870-V8** Elbow, 70°, 2<sup>3</sup>/<sub>8</sub>" outlet. Includes 1800-K mounting kit.
- 8. **1800-K** Mounting Kit, adapter to elbow. Fits 1820, 1825, 1830, 1835, 1845, 1870-V6, and 1870-V8. Includes RG gasket, (2) RC1817 riser clamps and mounting hardware.
- 9. **RG** Gasket, elbow. Included in 1800-K mounting kit.
- 10. **RC1817** Riser Clamp. (2) Included in 1800-K mounting kit.

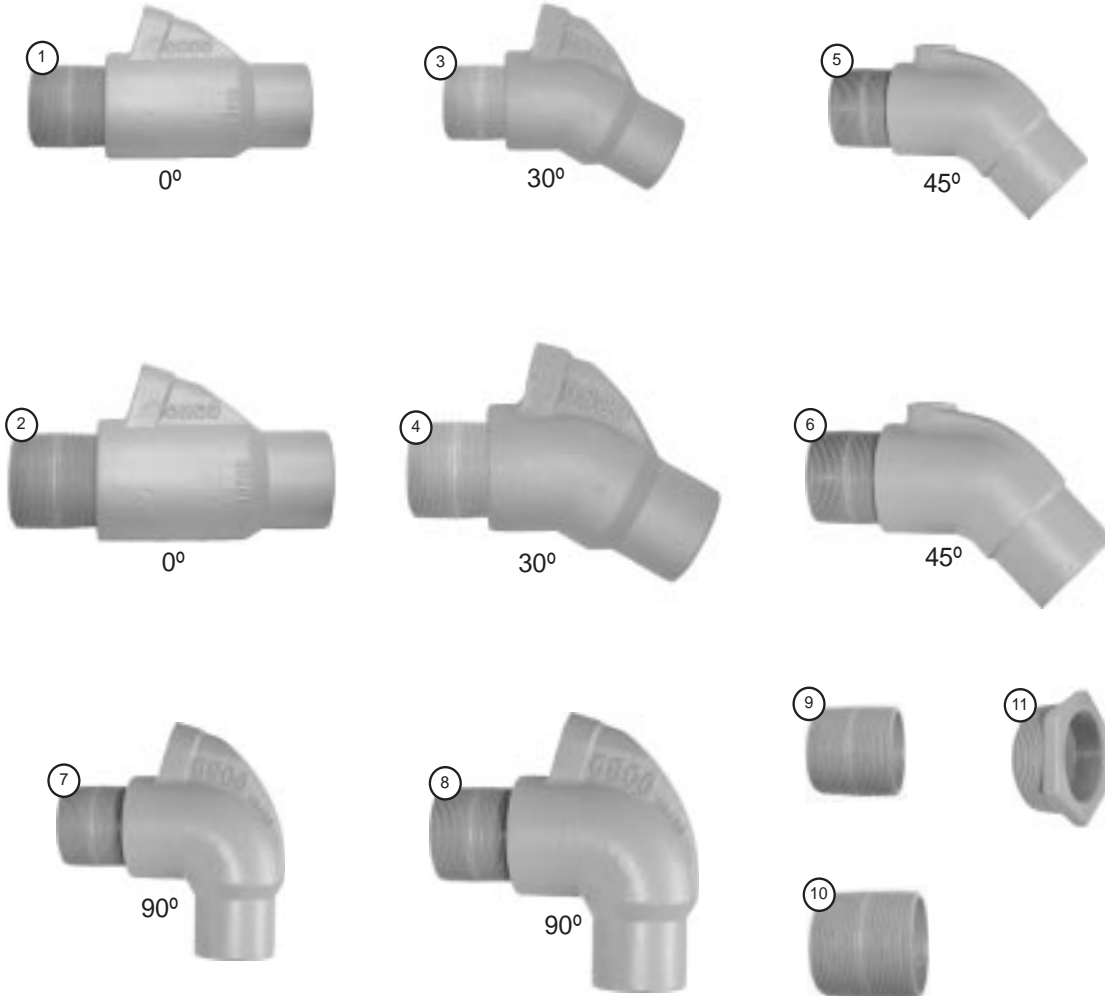
**NOTE:** These elbows attach to the conversion manifolds using the RA or RB style adapters. The RA and RB adapters are included with the manifold or can be purchased separately.



Elbows: 18000 Series

**OSCO**

For Conversion Manifolds



1. **18300** Elbow, Straight, 2<sup>3/8</sup>" outlet. 2" MPT. Includes 2" Nipple.
2. **18350** Elbow, Straight, 3" outlet. 2<sup>1/2</sup>" MPT. Includes 2<sup>1/2</sup>" Nipple.
3. **18200** Elbow, 30°, 2<sup>3/8</sup>" outlet. 2" MPT. Includes 2" Nipple.
4. **18250** Elbow, 30°, 3" outlet. 2<sup>1/2</sup>" MPT. Includes 2<sup>1/2</sup>" Nipple.
5. **18500** Elbow, 45°, 2<sup>3/8</sup>" outlet. 2" MPT. Includes 2" Nipple.
6. **18550** Elbow, 45°, 3" outlet. 2<sup>1/2</sup>" MPT. Includes 2<sup>1/2</sup>" Nipple.
7. **18400** Elbow, 90°, 2<sup>3/8</sup>" outlet. 2" MPT. Includes 2" Nipple.
8. **18450** Elbow, 90°, 3" outlet. 2<sup>1/2</sup>" MPT. Includes 2<sup>1/2</sup>" Nipple.
9. **CN2** Nipple, 2". Heavy duty.
10. **CN2.5** Nipple, 2<sup>1/2</sup>". Heavy duty.
11. **EB-2** Bushing, 2" to 2<sup>1/2</sup>"

**NOTE:** These elbows attach to the conversion manifolds using the AE (2" pipe thread) or BE (2<sup>1/2</sup>" pipe thread) adapters. The AE and BE adapter are included with the manifolds or can be purchased separately.

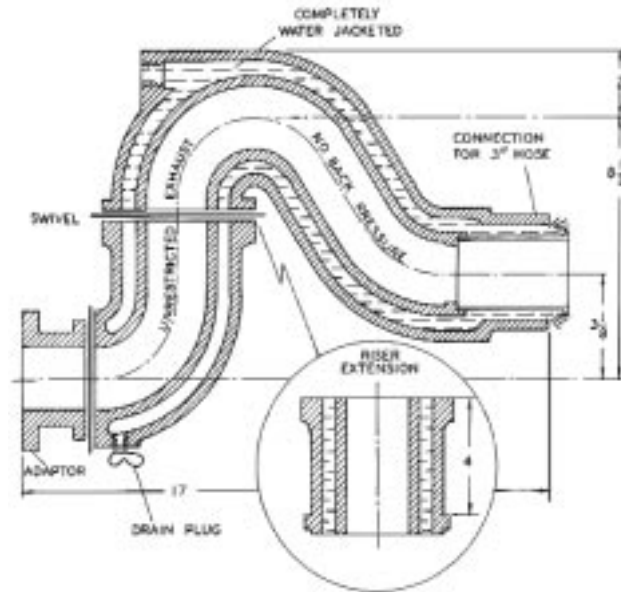
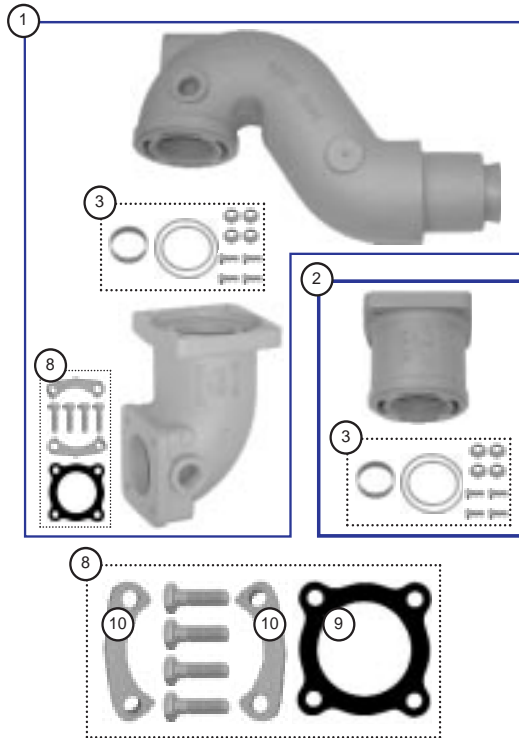


**Risers: 1800 Series**

**OSCO**

For Conversion Manifolds

Necessary pipe plugs are included.



1. **1812-8** Riser, 8½". Includes 1812 lower elbow, 5639 riser, 1800-K mounting kit, and 7087-MK mounting kit.
2. **4EXT-12** Spacer, 4". Includes spacer # 4-EXT and mounting kit 7087-MK.
3. **7087-MK** Mounting Kit, swivel elbow and extension. Includes 7087 sleeve, 7087-OR O-ring set and 5639-CL clamp set.
4. **1815-5** Riser, 5". Body only. Attaches to the manifold using the RB or RA adapters.
4. **1815-5x52A** Riser ass'y, 5". With A style elbow for 2⅝" hose. Includes (2) 1800-K mtg kits, 1815-A pipe and 52A elbow.
4. **1815-5x52B** Riser ass'y, 5". With B style elbow for 2⅝" hose. Includes (2) 1800-K mtg kits, 1815-A pipe and 52B elbow.
4. **1815-5x52C** Riser ass'y, 5". With C style elbow for 2⅝" hose. Includes (2) 1800-K mtg kits, 1815-A pipe and 52C elbow.
4. **1815-5x525A** Riser ass'y, 5". With A style elbow for 3" hose. Includes (2) 1800-K mtg kits, 1815-A pipe and 525A elbow.
4. **1815-5x525B** Riser ass'y, 5". With B style elbow for 3" hose. Includes (2) 1800-K mtg kits, 1815-A pipe and 525B elbow.
5. **1815-8** Riser, 8". Attaches to the manifold using the RB or RA adapters.
5. **1815-8x52A** Riser ass'y, 8". With A style elbow for 2⅝" hose. Includes (2) 1800-K mtg kits, 1815-A pipe and 52A elbow.
5. **1815-8x52B** Riser ass'y, 8". With B style elbow for 2⅝" hose. Includes (2) 1800-K mtg kits, 1815-A pipe and 52B elbow.
5. **1815-8x52C** Riser ass'y, 8". With C style elbow for 2⅝" hose. Includes (2) 1800-K mtg kits, 1815-A pipe and 52C elbow.
5. **1815-8x525A** Riser ass'y, 8". With A style elbow for 3" hose. Includes (2) 1800-K mtg kits, 1815-A pipe and 525A elbow.
5. **1815-8x525B** Riser ass'y, 8". With B style elbow for 3" hose. Includes (2) 1800-K mtg kits, 1815-A pipe and 525B elbow.
6. **1815-A** Water Pipe. Included with 1815 series riser ass'y.
7. **Riser Elbows** Elbows. A, B, or C style elbows.
8. **1800-K** Mounting Kit. Fits 1800 series risers. Includes (2) RC1817 riser clamps, RG gasket, and mounting hardware.
9. **RG** Gasket, riser. Included in 1800-K.
10. **RC1817** Riser Clamp. Included in 1800-K.

**NOTE:** These risers attach to the conversion manifolds using the RA or RB style adapters. The RA and RB adapters are included with the manifold or can be purchased separately.

Phone: 800-225-0004    Fax: 908-486-1056  
e-mail: sales@sealandpower.com

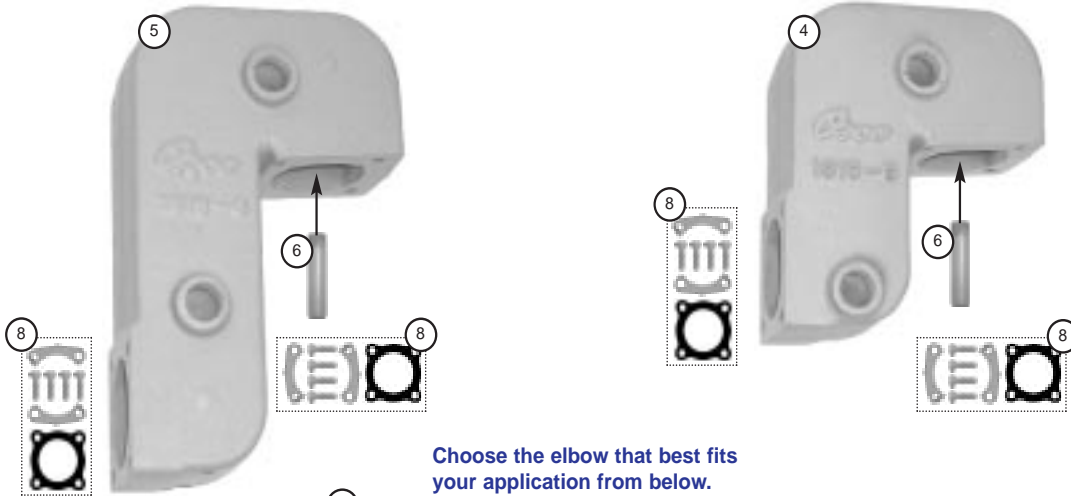


Risers: 1800 Series

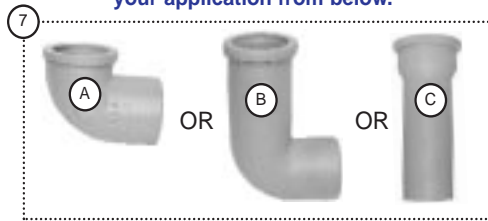
**OSCO**

For Conversion Manifolds

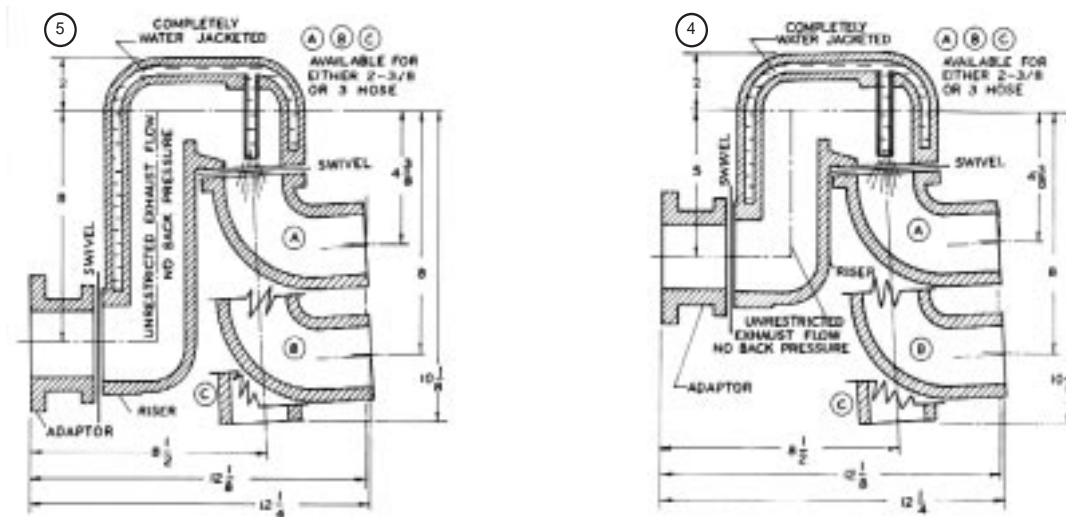
Necessary pipe plugs are included.



Choose the elbow that best fits your application from below.



- A = Short 90° Elbow
  - B = Long 90° Elbow
  - C = Straight Connector
- 7 **52A** = 2 1/8" Outlet      7 **52B** = 2 3/8" Outlet      7 **52C** = 2 3/8" Outlet.  
7 **525A** = 3" Outlet              7 **525B** = 3" Outlet



**NOTE:** The 1815-A Water Pipe must be installed in the 1815 series risers. Without this pipe the water will not flow properly, and can result in water ingestion. The 1815-A is included with the riser assembly.

Phone: 800-225-0004    Fax: 908-486-1056  
e-mail: sales@sealandpower.com