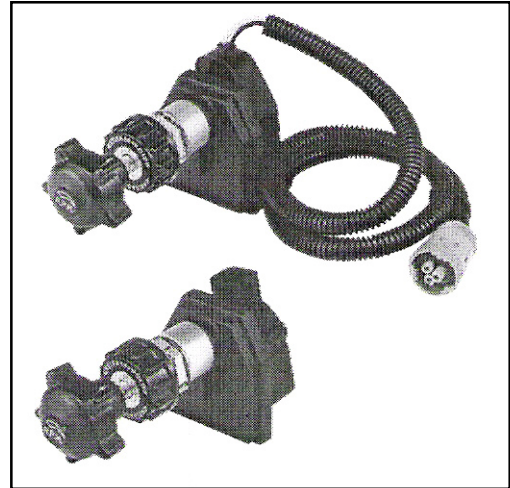


Electronic Throttle Controls Hand Operated

For use with electronic engines, the ETC allows a remote, hand operated control for engine RPM. These controls have a range of applications on vehicles such as fire trucks, generator sets, trucks, agricultural tractors, and construction equipment.



Electronic Throttle Control Cross Reference						
Engine	Model	New Part No.	Turn Direction	Turns	Pot Value	Old Part No.
Caterpillar Industrial	8 VDC CPU Input 12 VDC Input	310730	CCW	1.75	SPL	N/A
		311421 ¹	CCW	1.75	SPL	N/A
		311421-001 ²	CCW	1.75	SPL	N/A
		311421-002 ³	CCW	1.75	SPL	N/A
Cummins	W/O Idle Validation W/O Idle Validation Celect™ Plus ISB, ISC, ISL	310714-001	CW	2.25	2.5K	309718
		310714-004	CCW	2.25	2.5K	N/A
		311440	CCW	1.5	2.5K	N/A
Detroit Diesel	DDEC™ I, II & III IV & V DDEC™ I, II & III IV & V Series 40	310714-001	CW	2.25	2.5K	305662
		310714-004	CCW	2.25	2.5K	N/A
		310714-008	CW	2.25	18K	
John Deere	400 Series 6076 & 6081 500 Series 6101	310714-002	CW	2.25	5K	310423
		310714-005	CCW	2.25	5K	N/A
Navistar	T444E, & DT466E 530E	310714-001	CW	2.25	2.5K	309718
		310714-004	CCW	2.25	2.5K	N/A
		310714-008	CW	2.25	18K	
Pigtail Connector		306777	18" Pigtail connector for ETC. For Use with 310714 part numbers only.			

¹ Idle 16%, WOT 82%

² Idle 7.5%, WOT 92.5%

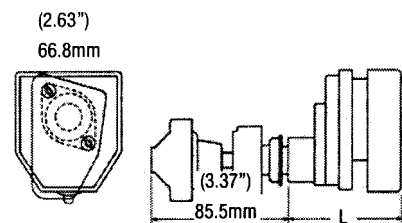
³ Idle 7.5%, WOT 80%

CW = Clockwise CCW = Counter clockwise WOT = Wide Open Throttle

Key Features

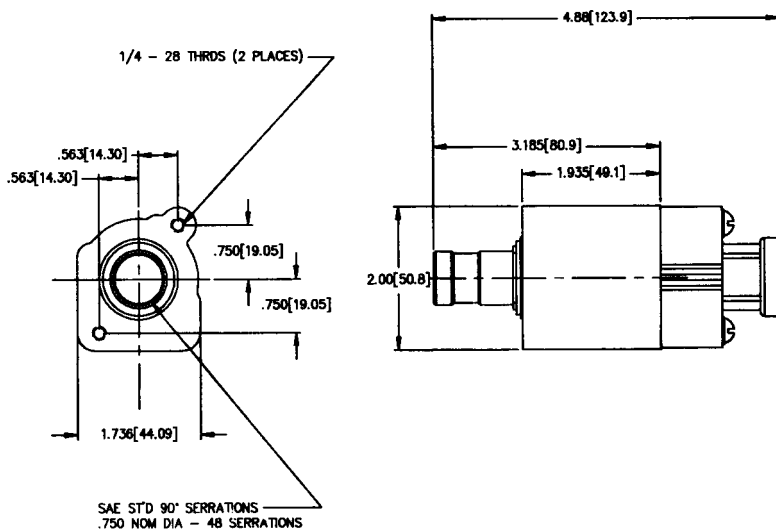
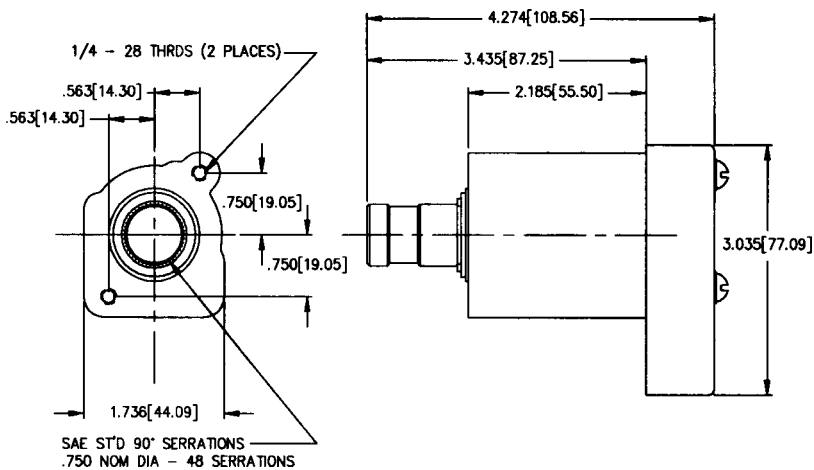
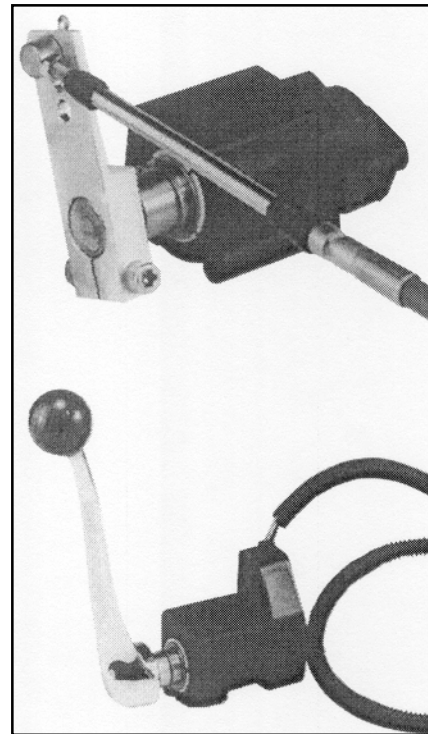
- Pigtail available – for most engines, a pigtail assembly is available as an optional connection.
- Visual design – the basic flat black design of the unit fits well with both cab and exterior panel displays.
- Waterproof – the materials and seals designed into the units are suitable for outdoor environments.

Part Number	"L" Dimension
310714	3.33"
311421	2.85"
311440	2.87"



Electronic Throttle Controls Lever Operated

For use with electronic engines, the LO-ETC allows a remote, hand operated control for engine RPM. LO-ETCs with various engine sensors can be mounted near the engine or at a location convenient to the operator. The option of using a cable lever or hand lever combined with cable or harness length flexibility provides a control system with a great deal of flexibility during vehicle design.



Key Features

- Pigtail available – for most engines, a pigtail assembly is available as an optional connection.
- Visual design – the basic flat black design of the unit fits well with both cab and exterior panel displays.
- Waterproof – the materials and seals designed into the units are suitable for outdoor environments.

Electronic Throttle Controls Lever Operated

Ordering Information				
Engine	Model	Part Number	Turn Direction	Pot Value
Caterpillar	8 VDC CPU Input	311788	CW	SPL
	12 VDC Input	311873	CW	SPL
Cummins	W/O Idle Validation	311789-001	CW	2.5K
	W/O Idle Validation	311789-003	CCW	2.5K
	Celect™ Plus ISB, ISC, ISL	311821	CW	2.5K
Detroit Diesel	DDEC™ I, II & III IV & V	311789-001	CW	2.5K
	DDEC™ I, II & III IV & V	311789-003	CCW	2.5K
	Series 40	311789-009	CCW	18K
John Deere	400 Series 6076 & 6081	311789-002	CW	5K
	500 Series 6101 400 Series 6076 & 6081 500 Series 6101	311789-004	CCW	5K
Navistar	T444E, & DT466E	310714-001 *	CW	2.5K
		310714-004 *	CCW	2.5K
	530E	311789-009	CCW	18K
18" Pigtail Connector		306777		

CW = Clockwise

CCW = Counter clockwise

* Hand Operated



Pigtail connector

LO - ETC Accessories	Part No.
Cable Lever	
Cable Lever Assembly	311814
Hand Lever	
SR Hand Lever	312018
ST Hand Lever	031765-013
LO-ETC Mounting Bracket	311800

LO-ETC's are suitable for use with 30 and 40 series cables.
See push-pull cable section for specifications and part numbers.